

Optimization of the Production of Lovastatin from *Aspergillus sclerotiorum* PSU-RSPG178 under Static Liquid Culture using Response Surface Methodology

(Pengoptimuman Pengeluaran Lovastatin daripada *Aspergillus sclerotiorum* PSU-RSPG178 di bawah Kultur Cecair Statik menggunakan Kaedah Gerak Balas Permukaan)

SUDARAT SUWANNARAT, JUTARUT IEWKITTAYAKORN, YAOWAPA SUKPODMA, VATCHARIN RUKACHAISIRIKUL, SOUWALAK PHONGPAICHT & WILAIWAN CHOTIGEAT*

ABSTRACT

The effect of lovastatin on cholesterol synthesis is well known. Although lovastatin has been produced from several Aspergillus species and cultivation systems, the yield of lovastatin from Aspergillus sclerotiorum PSU-RSPG178 in a static liquid system has not yet been determined. Therefore, the objective of this study was to optimize lovastatin production from this strain using a central composite design developed through response surface methodology (RSM). The inoculum was prepared from mycelium or spore cultured in static liquid and shaking systems with potato dextrose broth (PDB) as the medium. The best inoculum preparation and cultivation systems were selected to study the optimization of the four fermentation parameters of medium concentration (X-5X), temperature (25-37°C), culture medium to flask volume ratio (2.5-12.5) and time (7-35 days). The best inoculum preparation was the mycelium method and the best cultivation system was the static liquid system. In the optimization procedure, a yield of 1315.69 mg/L lovastatin was obtained at a PDB concentration of 5X, a temperature of 25°C, a medium to flask volume ratio of 1:2.5 and a time of 21 days. In a model employing the optimized parameters, temperature was found to have the most effect on lovastatin production, which will decrease if temperature increases above 25°C. Based on this study, A. sclerotiorum PSU-RSPG178 can be a useful strain for producing lovastatin and RSM as an optimization technique not only reduced the number of experiments but also resulted in an optimized lovastatin yield.

Keywords: *Aspergillus sclerotiorum* PSU-RSPG178; hypercholesterolemic; liquid static culture; lovastatin; RSM

ABSTRAK

Kesan lovastatin pada sintesis kolesterol telah diketahui. Walaupun lovastatin dihasilkan daripada beberapa spesies Aspergillus dan sistem penanaman, hasil bagi lovastatin daripada Aspergillus sclerotiorum PSU-RSPG178 dalam sistem cecair statik masih belum ditentukan. Oleh itu, objektif kajian ini adalah untuk mengoptimumkan pengeluaran lovastatin daripada strain ini menggunakan reka bentuk komposit pusat yang dibangunkan melalui kaedah gerak balas permukaan (RSM). Inokulum disediakan daripada miselium atau spora dikultur dalam cecair statik dan sistem goncangan dengan kaldu kentang dektrosa (PDB) sebagai medium. Sistem penyediaan dan penanaman inokulum terbaik telah dipilih untuk kajian pengoptimuman empat parameter penapaian kepekatan sederhana (X-5X), suhu (25-37°C), kultur medium kepada nisbah isi padu kelalang (2.5-12.5) dan masa (7-35 hari). Persediaan inokulum terbaik adalah kaedah miselium dan sistem penanaman terbaik adalah sistem cecair statik. Dalam prosedur pengoptimuman, hasil lovastatin sebanyak 1315.69 mg/L telah diperolehi pada kepekatan PDB 5X, suhu 25°C, medium kepada nisbah isi padu kelalang 1:2.5 dan tempoh masa 21 hari. Model yang menggunakan parameter optimum, suhu didapati memberi kesan ketara pada pengeluaran lovastatin, yang akan berkurang jika suhu meningkat melebihi 25°C. Berdasarkan kajian ini, A. sclerotiorum PSU-RSPG178 boleh menjadi strain yang berguna untuk menghasilkan lovastatin dan RSM sebagai teknik pengoptimuman yang bukan sahaja mengurangkan bilangan uji kaji tetapi juga memberikan hasil optimum lovastatin.

Kata kunci: *Aspergillus sclerotiorum* PSU-RSPG178; hiperkolesterol; kultur cecair statik; lovastatin; RSM

INTRODUCTION

Most heart attacks and cardiovascular diseases are the result of hypercholesterolemia which is the accumulation of cholesterol in blood plasma and leads to atherosclerosis. To reduce levels of cholesterol (>200 mg/dL) in the blood, lovastatin (mevinolin and monacolin K) has been proposed as a potent hypercholesterolemic agent. Lovastatin is an inhibitor of 3-hydroxy-3-methylglutaryl-CoA reductase

(HMG-CoA reductase), which is a rate-limiting enzyme in cholesterol biosynthesis (Lai et al. 2005). It is a member of a family of drugs generally called statins which are in clinical use for reducing LDL levels and are more widely used than other cholesterol-lowering drugs. Lovastatin not only plays a role in the enhancement of endothelial function, but also has anti-inflammatory and anti-atherothrombotic properties and also plays a key role as

an immunomodulator (Mihos et al. 2014) and a cancer cell apoptosis agent (Zhao et al. 2016).

Lovastatin is produced as a secondary metabolite of the polyketide pathway by various fungi such as *Monascus* spp., *Beauveria bassiana*, *Aspergillus fumigatus* and *Aspergillus terreus* (Mukhtar et al. 2014). Among the various lovastatin producing species, *A. terreus* is well known as the most productive (Marcin & Marta 2011; Samiee et al. 2003) and can be grown under submerged fermentation (SmF) or solid state fermentation (SSF) (Kamath et al. 2015; Mulder et al. 2015). Grown under submerged cultivation in soluble starch and sodium glutamate as, respectively, the carbon and nitrogen sources, the lovastatin production from *A. terreus* LA414 was 523.9 mg/L after cultivation for 8 days at a temperature of 28°C (Jia et al. 2009). *A. terreus* ATCC 20542, cultured in a lactose-based medium (LBM) at 28°C and shaken at 200 rpm, yielded 873 mg/L on day 10 (Lai et al. 2007), while *A. terreus* ATCC 20542, cultured in a mixture of glycerol and lactose under solid state fermentation at 30°C, yielded 122 mg/L on day 7 (Marcin et al. 2011). Among cultivation systems, SmF was found to be the most appropriate for culturing fungi for lovastatin production in batch and fed-batch systems (Mulder et al. 2015). However, it was noted that SmF relies on the use of shaking which results in a high cost culture system. There is, therefore, reason to investigate other culture systems which can produce high yields of lovastatin more economically. Normally, fungi are able to grow without a shaking system and often grow on plant matter. Static liquid culture has been successfully employed to cultivate various plants such as rhododendron (Douglas et al. 1984), roses (Wong & Chu 1995), garlic (Kim et al. 2003) and *Doritaenopsis* (Tsai & Chu 2008), suggesting that applying SmF in a static liquid culture, as an alternative to a shaking system, may be of interest in culturing fungi to produce lovastatin. Moreover, the cultivation of fungi to produce lovastatin using a static liquid culture has not previously been investigated.

Studies seeking to develop and enhance lovastatin production have mainly focused on finding new strains of source fungi and the optimization of fermentation parameters such as temperature, humidity, time and aeration (Dikshit & Tallapragada 2015). In the case of secondary metabolite production, the type of inoculum, either from fungi or hyphae, is also very important (Samiee et al. 2003). The optimization of each parameter requires a number of experiments and is time consuming because each factor can only be optimized by keeping the other factors constant and the fact that the optimum constant levels may be unknown could produce inferior results because of the combined effect of all the factors. However, these limitations can be overcome by optimizing all the parameters of interest using response surface methodology (RSM) (Pansuriya & Singhal 2010) RSM is applied to experimental design to find the optimum conditions and reduce process variability. It can also

reduce the time and number of experiments needed to determine reliable optimum levels. Moreover, the relative significance of each parameter can be evaluated by this method (Zhou et al. 2009). Suraiya et al. (2018) applied RSM method to optimize fermentation parameters on lovastatin production by *Monascus purpureus* using *Saccharina japonica* as solid fermented substrate. The experiments in which lovastatin was produced under optimal conditions yielding 13.98 mg/g dry fermented substrate corresponding to that of predicted combination of process parameters yielding 13.40 mg/g dry fermented substrate. Atli et al. (2016) optimized the culture conditions to improve lovastatin production from *Omphalotus olearius* OBCC 2002 using RSM. A medium containing glucose (10 g/L), peptone (5 g/L), thiamine (1 mg/L), and NaCl (0.4 g/L) yielded 12.51 mg/L lovastatin under submerged fermentation. This yield was eight times higher than that produced using unoptimized media. Samiee et al. (2003) screened various filamentous fungi to study lovastatin production using the spore inoculum method. All the experiments were incubated in a complex medium in a rotary shaker incubator at 180 rpm at 28°C for 7 days. The fungi used in the study, with their yields, were as follows: *A. terreus* (55 mg/L), *A. parasiticus* (4.5 mg/L), *A. fischeri* (2.0 mg/L), *A. flavus* (9.0 mg/L), *A. umbrosus* (14.1 mg/L), *Penicillium funiculosom (pinophilum)* (19.3 mg/L), *Trichoderma viridae* (9.0 mg/L), *Trichoderma longibrachiatum* (1.0 mg/L), *Acremonium chrysogenum* (2.5 mg/L). Mouafi et al. (2016) reported that the optimal lovastatin production (3.353 mg/g of dried fermented matter) from *A. fumigatus* was achieved at a temperature of ~28°C and a pH5.0 with an incubation period of 12 days. Elsewhere, the optimal yield of lovastatin from *Monascus ruber*, incubated at 25°C, at pH5.0 under submerged fermentation with shaking at 150 rpm for 10 days, was 131 mg/L (Sripalakit et al. 2011).

The optimum conditions for lovastatin production from the new strain, *A. sclerotiorum* PSU-RSPG 178, isolated from a soil sample, were still unexplored and the strain may be another source of lovastatin production. Phainuphong et al. (2016) indicated that the lovastatin produced from *A. sclerotiorum* RSPG 178 displayed much stronger noncytotoxic effects against noncancerous Vero cells activity, with an IC₅₀ value of 2.2 µM.

The main objective of this research was thus to optimize lovastatin production from *A. sclerotiorum* PSU-RSPG 178 using a central composite design employing RSM. We used a strain of *A. sclerotiorum* PSU-RSPG 178 cultured from mycelium and spore inoculum cultured under static liquid and shaking systems with potato dextrose broth (PDB) as the medium. To determine the best conditions of the fermentation parameters for optimization, we evaluated medium concentration (X-5X), temperature (25-37°C), medium to flask volume ratio (2.5-12.5 by volume) and time (7-35 days). The lovastatin yields were analyzed in both cell and broth extracts.

MATERIALS AND METHODS

MICROORGANISMS

The soil fungus strain, *A. sclerotiorum* PSU-RSPG178 was isolated from a soil sample collected from the Plant Genetic Conservation Project under the Royal Initiation of Her Royal Highness Princess Maha Chakri Sirindhorn at Ratchaprapa Dam in Suratthani Province, Thailand. The *A. sclerotiorum* PSU-RSPG178 was grown on potato dextrose agar (PDA) at 28°C for 7 days to prepare the inoculum.

CULTIVATION SYSTEM

The *A. sclerotiorum* PSU-RSPG178 inoculum was prepared as follows: Mycelial plug: The mycelial plug inoculum was prepared according to Daengrot et al. (2015). Five mycelial agar plugs (0.5 × 0.5 cm²) were inoculated into 250 mL Erlenmeyer flasks containing 100 mL of PDB.

Spore suspension: The spore inoculum was prepared according to López et al. (2003). The spores were collected by washing the petri dish culture with a sterile aqueous solution of 2% Tween 20 in 0.85% NaCl which was shaken for 30 min and diluted to a concentration of 2 × 10⁸ spores/mL. Spores were counted with a hemocytometer. An aliquot of 500 mL of the spore suspension was inoculated into 250 mL Erlenmeyer flasks containing 100 mL of PDB. All experiments were cultured in a 150 rpm shaking incubator at 28°C for 7, 14 and 28 days. The method which gave the highest yield of lovastatin concentration was employed to prepare an inoculum of *A. sclerotiorum* PSU-RSPG178 for the study of cultivation systems. Two cultivation systems were tested; one used shaking (150 rpm), whereas the other was a static liquid system. Both systems were conducted at 28°C for 7, 14 and 28 days.

RSM EXPERIMENTAL DESIGN

Development of the experiment to select the optimal fermentation parameters for lovastatin production employed a central composite design at five levels of RSM, created using the DESIGN EXPERT software 6.0.10 trial version (Stat-Ease, Minneapolis, USA). The parameters included various concentrations of PDB, cultivation times, temperatures and ratios of medium to flask volume. The codes and actual factor levels at coded factor levels are shown in Table 1.

Based on the factor levels shown in Table 1, a set of 28 experiments was required with each variable being tested at five levels (a = 2), as shown in Table 2. The inoculum was prepared according to previous experiments in 500 mL Erlenmeyer flasks and performed in triplicate.

The relationship between the coded and actual values, the independent variables and the responses were calculated according to the second order quadratic model shown in (1). The relative effects of two variables on response were investigated from three dimensional plots. The statistical parameters were analyzed using analysis of variance (ANOVA) with a significance level of $p < 0.05$ (Dikshit & Tallapragada 2015).

$$\begin{aligned} \text{Response} = & b_0 + b_1X_1 + b_2X_2 + b_3X_3 + b_4X_4 + \\ & b_5X_1X_1 + b_6X_2X_2 + b_7X_3X_3 + b_8X_4X_4 + \\ & b_9X_1X_2 + b_{10}X_1X_3 + b_{11}X_1X_4 + b_{12}X_2X_3 + \\ & b_{13}X_2X_4 + b_{14}X_3X_4 \end{aligned} \quad (1)$$

where Response is the response of the second order quadratic model (lovastatin yield); b_i ($i=0-14$) are the regression coefficients; and $X_1, X_2, X_3,$ and X_4 are the coded independent factors.

EXTRACTION OF LOVASTATIN

The lovastatin was extracted from each sample according to Daengrot et al. (2015) and Phainuphong et al. (2016). In each case, the culture was filtered to separate the liquid and wet mycelia. The liquid was extracted twice with ethyl acetate (EtOAc) (2 × 100 mL). The organic layer was evaporated over anhydrous Na₂SO₄ under reduced pressure until a dark brown gum was observed. The mycelia cakes were extracted with methanol (500 mL) and the methanol layer was concentrated under reduced pressure. Then, distilled water (50 mL) was added to the methanol extract and the mixture was washed twice with hexane (2 × 100 mL). The hexane layer was evaporated over anhydrous Na₂SO₄ under reduced pressure to obtain a crude extract in the form of a dark brown gum. The aqueous residue was extracted twice with an equal amount of EtOAc. The EtOAc layer was dried over anhydrous Na₂SO₄.

TABLE 1. Four variables in coded and natural units

Variable with designate	Code	Actual factor level at coded factor levels				
		-1	-0.5	0	0.5	1
PDB concentration (X PDB)	X ₁	1	2	3	4	5
Time (days)	X ₂	7	14	21	28	35
Medium to flask volume ratio	X ₃	2.5	5	7.5	10	12.5
Temperature (°C)	X ₄	25	28	31	34	37

HPLC ANALYSIS

The sample was transferred to a micro-centrifuge tube and dissolved in 1.0 mL of acetonitrile (RCL Labscan, HPLC grade). Standard solutions used for calibration purposes were prepared in the same way as described for the sample solutions, containing 10, 20, 40, 80, 160, 320 and 640 ppm. Quantitative HPLC analyses were performed on an Agilent 1200 series DAD HPLC system using an ACE @ Generix 5 C18 column (250 mm × 4.6 mm × 5 mm i.d.) with particles equilibrated at 25°C. Acetonitrile was used as mobile phase A, and mobile phase B was aqueous 0.1 % H₃PO₄ (aq) (Fisher Scientific). The flow rate was 1 mL/min, the injection volume 20 µL and peak detection was at 238 nm. Analysis started with 60% A and 40% B for 20 min (Ruchir & Rekha 2009).

RESULTS AND DISCUSSION

OPTIMUM INOCULUM PREPARATION

The yields of lovastatin produced using a mycelial plug inoculum preparation cultivated at 28°C for 7, 14 and 21 days were 48.17±0.24, 155.71±0.42, and 36.18±0.57 mg/L, respectively. Spore suspension inoculum yielded less than 1mg/L of lovastatin in all the experiments. Thus, the optimum inoculum preparation system used for further study was the mycelial plug method.

CULTIVATION SYSTEM

After cultivation, a well grown mycelial film covered the surface of the cultivation medium in the static liquid system, while spherical pellets were present in the cultivation medium of the shaking system. It was noted that the cultivation system affects the morphological characteristics of the fungal hyphae/mycelia which is in accordance with the findings of Ibrahim et al. (2015). The lovastatin concentrations produced in both systems are shown in Figure 1 as a function of cultivation time. The *A. sclerotiorum* cultured under shaking for 14 days yielded 155.71±0.42 mg/L lovastatin which was more than that produced in a cultivation time of either 7 days (48.17±0.24 mg/L) or 21 days (36.18±0.57 mg/L). The yield of lovastatin from the static liquid system after 14 days was 149.85±3.54 mg/L, which was higher than that produced after a cultivation time of either 21 days (145.01±9.43 mg/L) or 7 days (79.57±0.24mg/L). These results indicated that 14 days was the optimum cultivation time for both cultivation systems. There was no significant difference ($p < 0.05$) between the lovastatin yield from the shaking system and the yield from the static system. The authors selected the static liquid culture system for further study since this system has the advantage of being easily monitored as well as more economical.

In addition, by the 7th day of incubation, the PDB in both cultures had become more viscous. This increased viscosity rendered the cultures static and at this stage the fungal cells increased the synthesis of lovastatin until the

14th day of incubation. The amount of lovastatin obtained from static liquid culture for 21 days was similar to that obtained at 14 days. In contrast, the amount of lovastatin obtained from shaking culture was clearly lower at 21 days than after 14 days. Cultivation for more than 14 days increases the viscosity of the PDB beyond the point where the cells are able to use the medium and the depletion of nutrients due to the longer culture period resulted in a lower yield of lovastatin. In addition, viscosity greatly impedes the oxygen transfer necessary for lovastatin production, as demonstrated in studies of *A. terreus* in which lovastatin production under the static condition gave a higher yield than under the shaking condition (Lai et al. 2005).

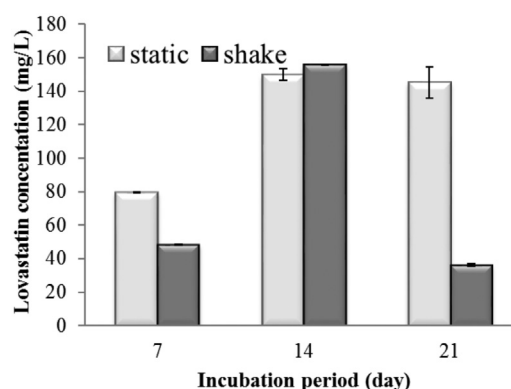


FIGURE 1. Lovastatin produced by *A. sclerotiorum* PSU-RSPG178 in a culture under shaking and static liquid culture as a function of cultivation time

FERMENTATION PARAMETER OPTIMIZATION BY RSM

The experimental results from the central composite design are shown in Table 2. The quadratic polynomial explaining the relationship of the four variables contributing to the lovastatin yield (equation (1)), can be rewritten as equation (2) after applying the regression analysis:

$$\begin{aligned} \text{Lovastatin yield (mg/l)} = & 12059.7 + (533.97) X_1 + \\ & (-42.12)X_2 + (-144.87)X_3 + \\ & (-713.49)X_4 + 11.69X_1X_1 + \\ & 0.25X_2X_2 + 1.61X_3X_3 \\ & 10.55X_4X_4 + (-1.30)X_1X_2 + \\ & (-0.80)X_1X_3 + (-17.30)X_1X_4 + \\ & (-0.82)X_2X_3 + 1.27 X_2X_4 + \\ & 4.27X_3X_4 \end{aligned} \quad (2)$$

where X_1 , X_2 , X_3 , and X_4 are the PDB concentration (X PDB), the time (days), the medium to flask volume ratio and the temperature (°C), respectively.

The result of an ANOVA on the quadratic model showed the model's F-value to be 14.86 (Table 3). The model's P-value (Prob>F) is very low. This result indicates that the model is significant. Also the R² (determination coefficient) value for the lovastatin yield was 0.974 indicating that 97.40% of the total variation in the experimental data could

TABLE 2. Full factorial central composite design of four variables in coded and natural units along with the observed response

Exp #	PDB (X PDB)	Time (days)	Media to flask volume ratio (by volume)	Temp (°C)	Lovastatin (mg/L)			
	X ₁	X ₂	X ₃	X ₄	BE	CE	CH	Total
1	3	21	7.5	31	1.67±0.06	1.18±0.41	0.5±0.19	3.65±0.05
2	4	14	10	28	69.02±15.58	346.44±89.28	45.87±14.32	461.32±111.88
3	3	21	7.5	37	<0.001	<0.001	<0.001	<0.001
4	4	28	10	28	62.56±3.67	148.87±53.79	9.48±4.57	218.50±60
5	2	14	5	28	69.76±6.51	177.32±18.62	31.38±16.18	278.47±23.91
6	4	14	5	28	113.41±72.73	241.36±82.18	175.82±46.78	496.70±41.90
7	3	21	2.5	31	0.27±0.12	0.53±0.32	0.19±0.13	0.99±0.5
8	3	21	12.5	31	4.32±0.61	1.32±0.25	1.34±0.32	6.12±1.95
9	3	21	7.5	25	42.97±1.9	566.71±42.65	77.04±10.85	686.72±66.71
10	3	21	7.5	31	1.51±0.1	1.55±0.59	0.41±0.04	3.47±0.69
11	2	7	7.5	28	22.50±5.33	127.97±49.37	9.63±2.18	160.09±55.48
12	5	21	7.5	31	0.73±0.29	2.73±1.29	0.95±0.08	4.41±1.54
13	3	35	7.5	31	6.37±2.73	6.42±3.31	11.85±3.54	24.65±10.04
14	2	28	10	28	35.85±0.62	43.61±1.13	15.12±2.83	94.58±18.46
15	4	28	5	34	0.69±0.43	0.25±0.18	0.68±0.44	0.83±0.59
16	2	14	10	34	0.44±0.26	0.44±0.16	0.61±0.57	1.49±0.99
17	2	28	5	34	0.76±0.08	0.19±0.11	0.41±0.36	1.01±0.58
18	2	7	7.5	28	24.27±5.02	90.58±16.56	17.69±4.68	132.54±21.69
19	2	14	10	28	37.07±7.49	137.04±21.97	13.27±9.38	183.22±28.27
20	2	14	5	34	0.29±0.07	0.54±0.27	0.44±0.07	1.17±0.36
21	4	28	5	28	271.79±9.00	176.82±27.10	5.44±1.21	454.05±20.15
22	4	14	10	34	0.65±0.1	0.93±0.41	0.65±0.37	2.26±0.82
23	1	21	7.5	31	3.97±0.22	8.31±0.02	3.59±0.58	15.87±9.47
24	2	28	5	28	173.64±22.51	54.87±31.63	3.02±1.32	231.54±17.52
25	3	7	7.5	31	0.35±0.18	0.47±0.12	0.52±0.15	1.34±0.32
26	4	28	10	34	1.53±0.80	13.31±1.04	2.26±0.40	10.72±8.05
27	4	14	5	34	0.53±0.12	0.91±0.20	2.03±0.27	8.57±1.99
28	2	28	10	34	0.29±0.22	0.11±0.02	0.63±0.61	1.89±0.94

Each lovastatin value recorded is a mean value from three samples ± standard deviation (S.D); BE, CE and CH are respectively broth extracts, cell extracts obtained from ethyl acetate, and cell extracts obtain from hexane

TABLE 3. Analysis of variance and regression for lovastatin production

Source	SS	df	MS	F	P>F	R ²	Adjusted R ²
Regression	936485	14	66891.8	14.86	<0.0001	0.974	0.878
Residual	58513.6	13	4501.0				
Total	994999	27					

SS is sum of squares; df is degree of freedom; MS is mean square

be explained by this model. Moreover, the R² of 0.974 is in reasonable agreement with the adjusted R² of 0.878, which confirms the reliability of this model, since the higher the adjusted R² than 0.75, the stronger the indication that this model can be acceptable.

The regression coefficients of the model for the lovastatin yield are shown in Table 4. The results showed that the highest coefficient value was that of the PDB concentration which had the greatest linear effect on the yield. However, the P value of this term was higher than 0.05 indicating the coefficient term to be not significant.

The significance of the regression coefficients of each term can be checked by reference to their P values, which, if less than 0.05 ($p < 0.05$), indicate that coefficient term to be significant: The smaller the magnitude of P, the more significant the corresponding coefficient (Pansuriya & Singhal 2010). A comparison of the P values obtained by each term of the regression in Table 4 shows that temperature ($p < 0.0000067$) had the largest effect on lovastatin yield and was a significant linear term, while the interaction between temperature and temperature was a significant quadratic term ($p < 0.00001$). The PDB

concentration was also a significant linear term ($p < 0.021$) and the interaction between the PDB concentration and the temperature was also significant ($p < 0.00855$). Consequently, it can be concluded that temperature exerted a significant effect on lovastatin production. This may be due to the fact that increasing the temperature leads to poor heat dissipation and a reduction in the oxygen level, thereby inhibiting the growth of microorganisms (Mouafi et al. 2016), which is in agreement with Negishi et al. (1986) and Munir et al. (2018), who found that increasing the temperature to 35°C inhibited lovastatin production because the metabolic processes of denaturing enzymes and other proteins were retarded.

The maximum lovastatin yield was 686.72 ± 66.71 mg/L with a PDB concentration of 3×, a cultivation period of 21 days, a medium to flask volume ratio of 7.5, and a temperature of 25°C (Table 2). Juzlov et al. (1996) considered the optimal temperature of 25°C observed in this study to be the best incubation temperature for high lovastatin production. Moreover, most of the lovastatin yield was detected in cells extracted with EtOAc (CE) rather than in the broth extracts (BE). This result is not in accordance with the results of cultivation using submerged fermentation, in which most of the lovastatin was found in the broth extracts (Kamath et al. 2015; Mulder et al. 2015). The separation of mycelial film from broth is also easier than that of spherical pellets from broth leading to easier extraction of the lovastatin. The static liquid system was thus viable for lovastatin production.

The RSM plots of the significant parameters for lovastatin production are shown in Figure 2. The optimum values of the four parameters of PDB concentration, time, medium to flask volume ratio and temperature obtained

from the maximum point of the model were calculated to be 5× PDB, 14 days, 2.5 and 25°C, respectively. The model predicted a maximum response of a yield of 1304.68 mg/L of lovastatin at this point. The calculated optimum parameters were validated by cultivation under those conditions, which yielded 360.83 ± 8.47 mg/L lovastatin. This yield was very much lower than the maximum predicted by the model, which was most likely to have been the result of the cultivation time of 14 days. Under these conditions, 14 days may not be sufficient for secondary metabolism of the polyketide pathway to occur. This result was confirmed by analysis of the total sugar in the medium at the end of cultivation. Using the phenol-sulfuric method in accordance with Dubois et al. (1956), the analysis determined glucose contents of 201.21, 84.24 and 9.09 mg/mL at cultivation times of 0, 14 and 21 days, respectively. Following these results, a cultivation period of 21 days was selected for further testing. The outcome of cultivation for 21 days was an increased lovastatin yield of 1315.69 ± 241.69 mg/L, which was very close to the response predicted by the model (1233.50 mg/L). Thus, the four optimum parameters were determined as 5× PDB concentration, 21 days cultivation time, 2.5 medium to flask volume ratio and 25°C. The use of RSM as an optimization technique has enabled the prediction of a maximum response in a number of previous studies, but in the field of cell cultivation, it is also necessary to consider the cell metabolism as well.

A comparison of the lovastatin production from different *Aspergillus* species grown on different media is quite difficult and it is not a simple matter to determine which species is the best producer. However, the lovastatin yield obtained from *A. sclerotiorum* PSU-RSPG 178 in this

TABLE 4. Regression coefficient from the central composite design experiment for lovastatin yield

Model parameter	Coefficient	Standard Error	t value	P value
b_0 Constant	12059.7	1818.6	6.631	0.000016
b_1 PDB con	533.97	205.04	2.604	0.02183
b_2 Time	-42.12	29.29	-1.438	0.174
b_3 Medium to flask ratio	-144.87	82.02	-1.766	0.101
b_4 Temp	-713.49	98.82	-7.220	0.0000067
b_5 PDB con × PDB con	11.69	13.69	0.853	0.409
b_6 Time × Time	0.253	0.279	0.906	0.382
b_7 Medium to flask volume ratio × Medium to flask volume ratio	1.607	2.191	0.733	0.476
b_8 Temp × Temp	10.55	1.522	6.936	0.00001
b_9 PDB con × Time	-1.296	2.396	-0.541	0.598
b_{10} PDB con × Medium to flask ratio	-0.801	6.709	-0.119	0.907
b_{11} PDB con × Temp	-17.30	5.591	-3.094	0.00855
b_{12} Time × Medium to flask ratio	-0.819	0.958	-0.855	0.408
b_{13} Time × Temp	1.269	0.799	1.588	0.136
b_{14} Medium to flask ratio × Temp	4.268	2.236	1.909	0.07863

PDB con is PDB concentration (X PDB); and Temp is temperature (°C)

study is compared to the yields from other *Aspergillus* species cultured on different media in Table 5; and Table 5 can be used as a guideline when considering the production of lovastatin from different sources. It should be noted that *A. sclerotiorum* PSU-RSPG 178 in this study produced 1315.69±241.69 mg/L of lovastatin, which exceeded that of *A. terreus* MIMA1 (256.00 mg/L) at the same temperature of 25°C and cultivation time of 21 days. Moreover, this study of the cultivation of *A. sclerotiorum* PSU-RSPG 178 for the production of lovastatin used only PDB while other studies of other *Aspergillus* species have used more complex media. This result indicates that the cultivation of *A. sclerotiorum* PSU-RSPG 178 has advantages over the cultivation of other species for lovastatin production.

CONCLUSION

Using RSM, we efficiently identified the optimum conditions for lovastatin production from *A. sclerotiorum* PSU-RSPG 178 using a mycelial plug inoculum under static liquid cultivation and PDB as the carbon source. The lovastatin yield of 1315.69±241.69 mg/L was achieved with the following optimized culture conditions: 5× PDB concentration, 21 days cultivation time, 2.5 medium to flask volume ratio and temperature of 25°C. This result suggests that *A. sclerotiorum* PSU-RSPG 178 and static liquid cultivation are an effective strain and cultivation system for lovastatin production. The static liquid cultivation is not only successfully employed to cultivate plants but was also

TABLE 5. Lovastatin obtained from other *Aspergillus* species

<i>Aspergillus</i> species	Medium	Cultivation condition	Lovastatin (mg/L)	Ref
<i>sclerotiorum</i> PSU-RSPG 178	PDB (5×) consists of 200×5 g/L potato, 20×5 g/L dextrose	Temp 25°C Time 21 days	1315.69	This work
<i>A. terreus</i> NIM A 1	70 g/L glycerol, 8 g/L peptone, 1 g/L MgSO ₄ ·7H ₂ O 30 g/L glucose 30 g/L g whole or defatted soybean flour	Temp 25°C Time 10-15 days	256	Manzoni et al. (1998)
<i>A. terreus</i>	50 g/L glucose, 20 g/L yeast extract, 30 g/L tomato paste 20 g/L oat meal, 10 g/L sodium acetate, 5 g/L ammonium sulfate, 2 g/L potassium, dihydrogen phosphate, 10 g/L mL trace element (pH7.0)	Temp 28°C Time 7 days	55.00	Samiee et al. (2003)
<i>A. terreus</i> ATCC 20542	5 g/L corn steep liquor, (CSL), 5 g/L yeast extract (YE), 5 g/L soybean meal, 15 g/L glucose, 70 g/L lactose, 10 mL/L a trace element solution, (pH6.5)	Temp 28°C Time 10 days	873.00	Lai et al. (2007)
<i>A. terreus</i> PM3	60 g/L lactose, 25 g/L soybean meal, 2 g/L KH ₂ PO ₄ , 1 g/L K ₂ HPO ₄ , 0.5 g/L MgSO ₄ ·7H ₂ O, 1 g/L FeSO ₄ ·4H ₂ O, 0.5g/L NaNO ₃ , 0.5g/L MnSO ₄ ·7H ₂ O	Temp 28°C Time 10 days	240.00	Patil et al. (2011)
<i>Aspergillus terreus</i> PU-PCSIR-1	40 g/L lactose 24 g/L peptonized milk, 25 g/L glucose %, 12.5 g/L monosodium glutamate, 2.5 g/L yeast extract 3.2 g/L linoleic acid; (pH: 7.4)	Temp 28°C Time 14 days	198.90	Azeem et al. (2018)

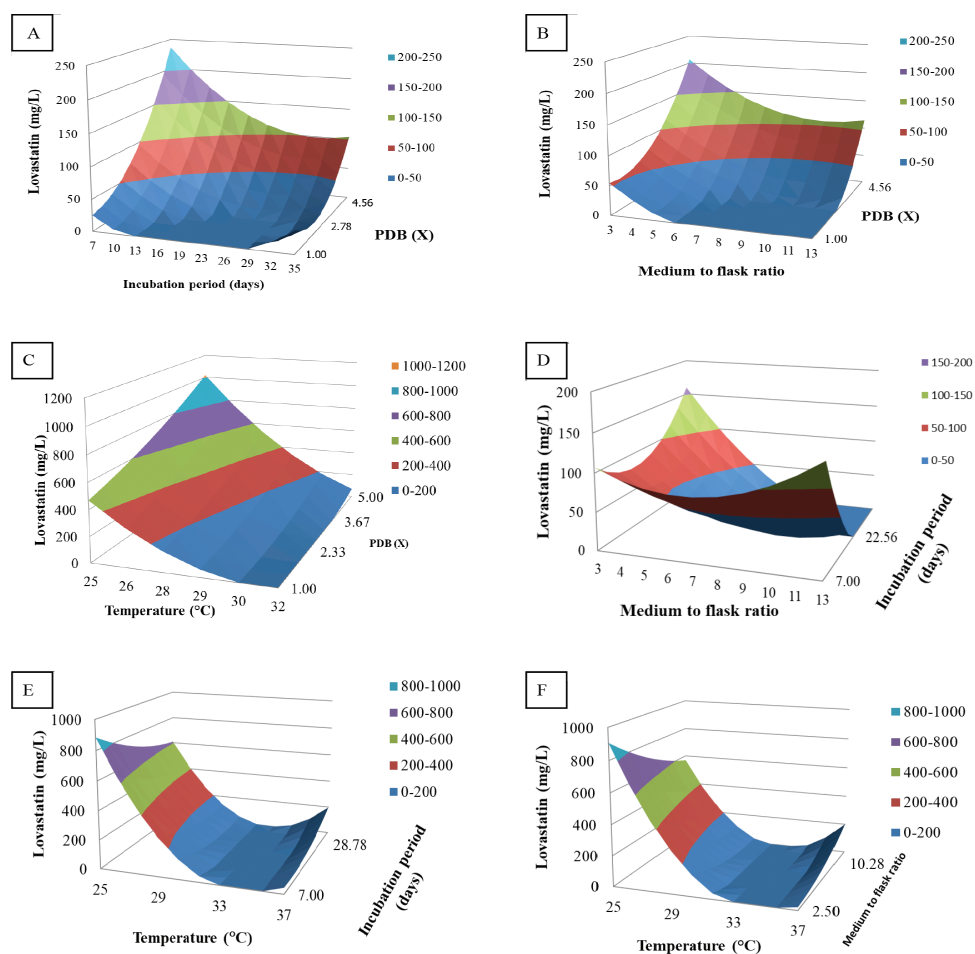


FIGURE 2. Response surface plot showing relative effects of different fermentation parameters on lovastatin production by *A. sclerotiorum* PSU-RSPG 178

in this study successfully applied to culture *A. sclerotiorum* to produce lovastatin. The use of RSM could be promoted as an optimization technique and logically should contribute to reducing the number of experiments necessary.

ACKNOWLEDGEMENTS

The authors gratefully acknowledge the NSTDA Chair Professor grant of the Crown Property Bureau and the National Science and Technology Development Agency to Professor Dr. Vatcharin Rukachaisirikul. We also thank the Department of Molecular Biotechnology and Bioinformatics, Faculty of Science, Prince of Songkla University and Center for Genomics and Bioinformatics Research, Faculty of Science, Prince of Songkla University, Hat Yai, Songkhla, Thailand.

REFERENCES

- Atlı, B., Yamaç, M., Yıldız, Z. & Isikhuemhen, O.S. 2016. Statistical optimization of lovastatin production by *Omphalotus olearius* (DC.) singer in submerged fermentation. *Preparative Biochemistry & Biotechnology* 46: 254-260.
- Azeem, M., Saleem, Y., Hussain, Z., Zahoor, S. & Javed, M.M. 2018. Optimization of culture conditions for the production of lovastatin by *Aspergillus terreus* in submerged fermentation. *Pharmaceutical Chemistry Journal* 52(3): 284-289.
- Daengrot, C., Rukachaisirikul, V., Tansakul, C., Thongpanchang, T., Phongpaichit, S., Bowornwiriyanpan, K. & Sakayaroj, J. 2015. Eremophilane sesquiterpenes and diphenyl thioethers from the soil fungus *Penicillium copticola* PSU-RSPG138. *Journal of Natural Products* 78: 615-622.
- Dikshit, R. & Tallapragada, P. 2015. Bio-synthesis and screening of nutrients for lovastatin by *Monascus* sp. under solid-state fermentation. *Journal of Food Science and Technology* 52: 6679-6686.
- Douglas, G.C. 1984. Propagation of eight cultivars of *Rhododendron in vitro* using agar-solidified and liquid media and direct rooting of shoots *in vivo*. *Scientia Horticulturae* 24: 337-347.
- Dubois, M., Gilles, K., Hamilton, J., Rebers, P.A. & Smith, F. 1956. Calorimetric method for determination of sugars and related substances. *Analytical Chemistry* 28: 350-356.
- Ibrahim, D., Welosamy, H. & Lim, S.H. 2015. Effect of agitation speed on the morphology of *Aspergillus niger* HFD5A-1 hyphae and its pectinase production in submerged fermentation. *World Journal of Biological Chemistry* 6: 265-271.
- Jia, Z., Zhang, X., Zhao, Y. & Cao, X. 2009. Effects of divalent metal cations on lovastatin biosynthesis from *Aspergillus terreus* in chemically defined medium. *World Journal of Microbiology and Biotechnology* 25: 1235-1241.

- Juzlov, P., Martinkova, L. & Kren, V. 1996. Secondary metabolites of the fungus *Monascus*. *Journal of Industrial Microbiology* 16: 163-170.
- Kamath, P.V., Dwarakanath, B.S., Chaudhary, A. & Janakiraman, S. 2015. Optimization of culture conditions for maximal lovastatin production by *Aspergillus terreus* (KM017963) under solid state fermentation. *HAYATI Journal of Biosciences* 22: 174-180.
- Kim, E., Hahn, E., Murthy, H. & Paek, K.Y. 2003. High frequency of shoot multiplication and bulblet formation of garlic in liquid cultures. *Plant Cell, Tissue and Organ Culture* 73: 231-236.
- Lai, L.S., Hung, C.S. & Lo, C.C. 2007. Effects of lactose and glucose on production of itaconic acid and lovastatin by *Aspergillus terreus* ATCC 20542. *Journal of Bioscience and Bioengineering* 104: 9-13.
- Lai, L.S.T., Tsai, T.H., Wang, T.C. & Cheng, T.Y. 2005. The influence of culturing environments on lovastatin production by *Aspergillus terreus* in submerged cultures. *Enzyme and Microbial Technology* 36: 737-748.
- López, J.L.C., Pérez, J.M.S., Sevilla, J.M.F., Fernández, F.G.A., Grima, E.M. & Chisti, Y. 2003. Production of lovastatin by *Aspergillus terreus*: Effects of the C:N ratio and the principal nutrients on growth and metabolite production. *Enzyme and Microbial Technology* 33: 270-277.
- Manzoni, M., Rollini, M., Bergomi, S. & Cavazzoni. 1998. Production and purification of statins from *Aspergillus terreus* strains. *Biotechnology Technology* 12(7): 529-532.
- Marcin, B. & Marta, P. 2011. Lovastatin and (+)-geodin formation by *Aspergillus terreus* ATCC 20542 in a batch culture with the simultaneous use of lactose and glycerol as carbon sources. *Engineering in Life Sciences* 11: 272-282.
- Mihos, C.G., Pineda, A.M. & Santana, O. 2014. Cardiovascular effects of statins, beyond lipid-lowering properties. *Pharmacological Research* 88: 12-19.
- Mouafi, F.E., Ibrahim, G.S. & Elsoud, M. 2016. Optimization of lovastatin production from *Aspergillus fumigatus*. *Journal of Genetic Engineering and Biotechnology* 14: 253-259.
- Mulder, K.C., Mulinari, F., Franco, O.L., Soares, M.S., Magalhães, B.S. & Parachin, N.S. 2015. Lovastatin production: From molecular basis to industrial process optimization. *Biotechnology Advances* 33: 648-665.
- Mukhtar, H., Ijaz, S.S. & Ikram-ul, H. 2014. Upstream and downstream processing of lovastatin by *Aspergillus terreus*. *Cell Biochemistry and Biophysics* 70: 309-320.
- Munir, N., Asghar, M., Murtaza, M.A., Akhter, N., Rasool, G., Shah, S.M.A., Tahir, I.M., Khan, F.S., Riaz, M., Sultana, S., Rashid, A., Akhlaq, M. & Akram, M. 2018. Enhanced production of Lovastatin by filamentous fungi through solid state fermentation. *Pakistan Journal of Pharmaceutical Sciences* 31 (4): 1583-1589.
- Negishi, S., Haung, Z.C., Hasumi, K. & Murakawa, S. 1986. Endo a productivity of onacolin K (mevinolin) in the genus *Monascus*. *Journal of Fermentation and Bioengineering* 64: 509-512.
- Pansuriya, R.C. & Singhal, R.S. 2010. Response surface methodology for optimization of production of lovastatin by solid state fermentation. *Brazilian Journal of Microbiology* 41: 164-172.
- Patil, R.H., Krishnan, P. & Maheshwarib, V.L. 2011. Production of Lovastatin by wild strains of *Aspergillus terreus*. *Natural Product Communications* 6: 183-186.
- Phainuphong, P., Rukachaisirikul, V., Saithong, S., Phongpaichit, S., Bowornwiryapan, K., Muanprasat, C., Srimaroeng, C., Duangjai, A. & Sakayaroj, J. 2016. Lovastatin analogues from the soil-derived fungus *Aspergillus sclerotiorum* PSU-RSPG178. *Journal of Natural Products* 79: 1500-1507.
- Ruchir, C.P. & Rekha, S.S. 2009. Supercritical fluid extraction of lovastatin from the wheat bran obtained after solid-state fermentation. *Food Technology and Biotechnology* 47: 159-165.
- Samiee, S.M., Moazami, N., Haghghi, S., Mohseni, F.A., Mirdamadi, S. & Bakhtiari, M.R. 2003. Screening of lovastatin production by filamentous fungi. *Iranian Biomedical Journal* 7: 29-33.
- Sripalakit, P., Riunkesorn, J. & Saraphanchotiwithaya, A. 2011. Utilisation of vegetable oils in the production of lovastatin by *Aspergillus terreus* ATCC 20542 in submerged cultivation. *Maejo International Journal of Science and Technology* 5: 231-240.
- Suraiya, S., Kim, J.H., Tak, J.Y., Siddique, M.P., Young, C.J., Kim, J.K. & Kong, I.S. 2018. Influences of fermentation parameters on lovastatin production by *Monascus purpureus* using *Saccharina japonica* as solid fermented substrate. *LWT - Food Science and Technology* 92: 1-9.
- Tsai, W. & Chu, C. 2008. Static liquid culture of doritaenopsis seedlings. *Scientia Horticulturae* 43: 206-210.
- Wong, M.Y. & Chu, C.Y. 1995. Effect of medium phase on the growth of rose explants *in vitro*. *Journal of Agriculture and Forestry* 44: 71-77.
- Zhao, Q., Li, M., Chen, M., Zhou, L., Zhao, L., Hu, R., Yan, R. & Dai, K. 2016. Lovastatin induces platelet apoptosis. *Environmental Toxicology and Pharmacology* 42: 69-75.
- Zhou, B., Wang, J., Pu, Y., Zhu, M., Liu, S. & Liang, S. 2009. Optimization of culture medium for yellow pigments production with *Monascus anka* mutant using response surface methodology. *European Food Research and Technology* 228: 895-901.
- Sudarat Suwannarat, Jutarut Iewkittayakorn & Wilaiwan Chotigeat*
Department of Molecular Biotechnology and Bioinformatics
Faculty of Science, Prince of Songkla University
Hat Yai, Songkhla 90112
Thailand
- Yaowapa Sukpondma & Vatcharin Rukachaisirikul
Department of Chemistry, Faculty of Science
Prince of Songkla University
Hat Yai, Songkhla 90112
Thailand
- Souwalak Phongpaichit
Department of Microbiology, Faculty of Science
Prince of Songkla University
Hat Yai, Songkhla 90112
Thailand
- Wilaiwan Chotigeat*
Center for Genomics and Bioinformatics Research
Faculty of Science, Prince of Songkla University
Hat Yai, Songkhla 90112
Thailand

*Corresponding author; email: wilaiwan58@hotmail.com

Received: 13 October 2017

Accepted: 5 September 2018